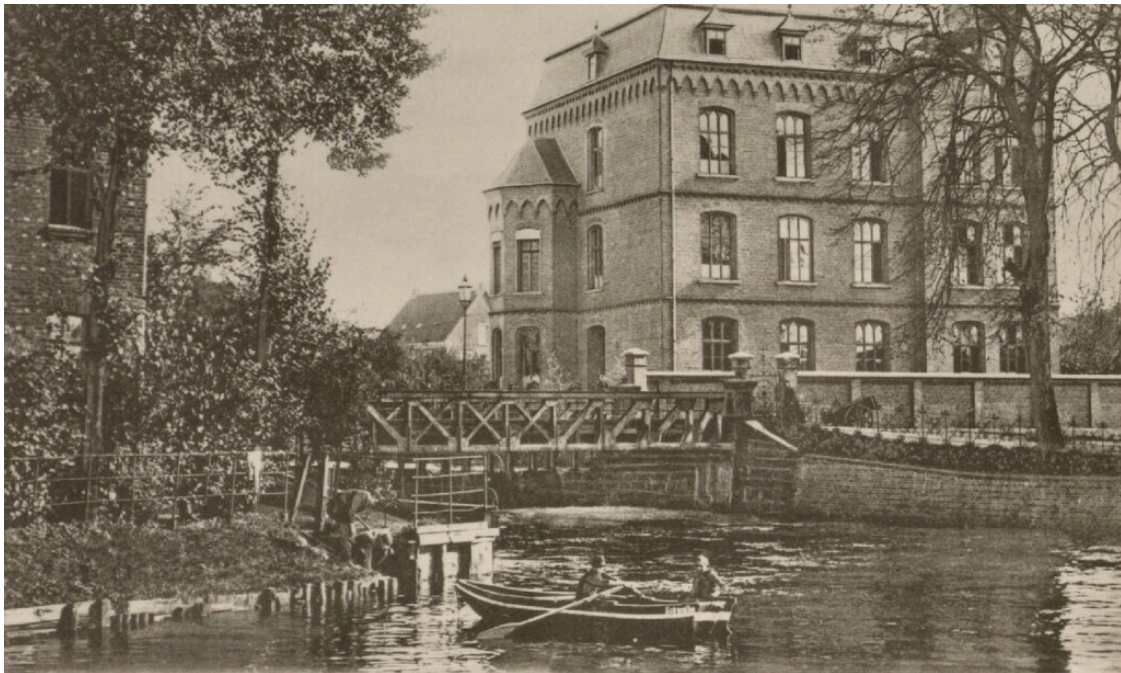


Secondary school for girls around 1904

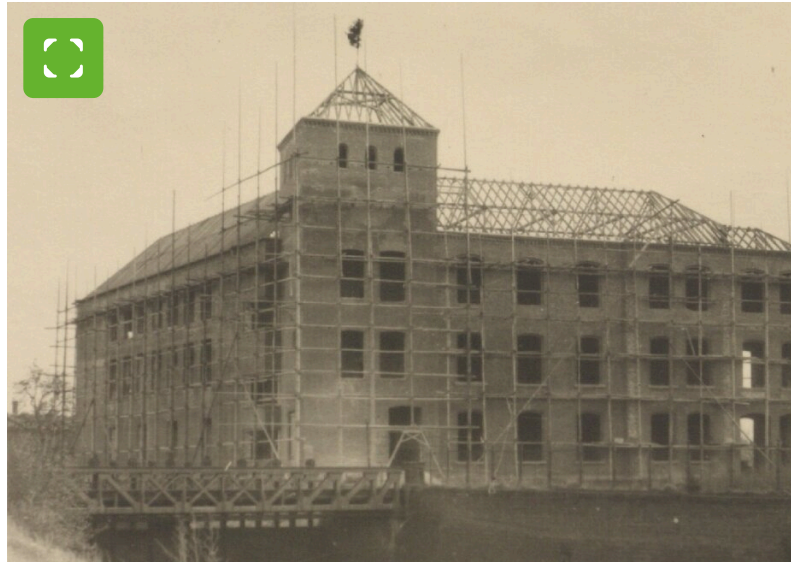


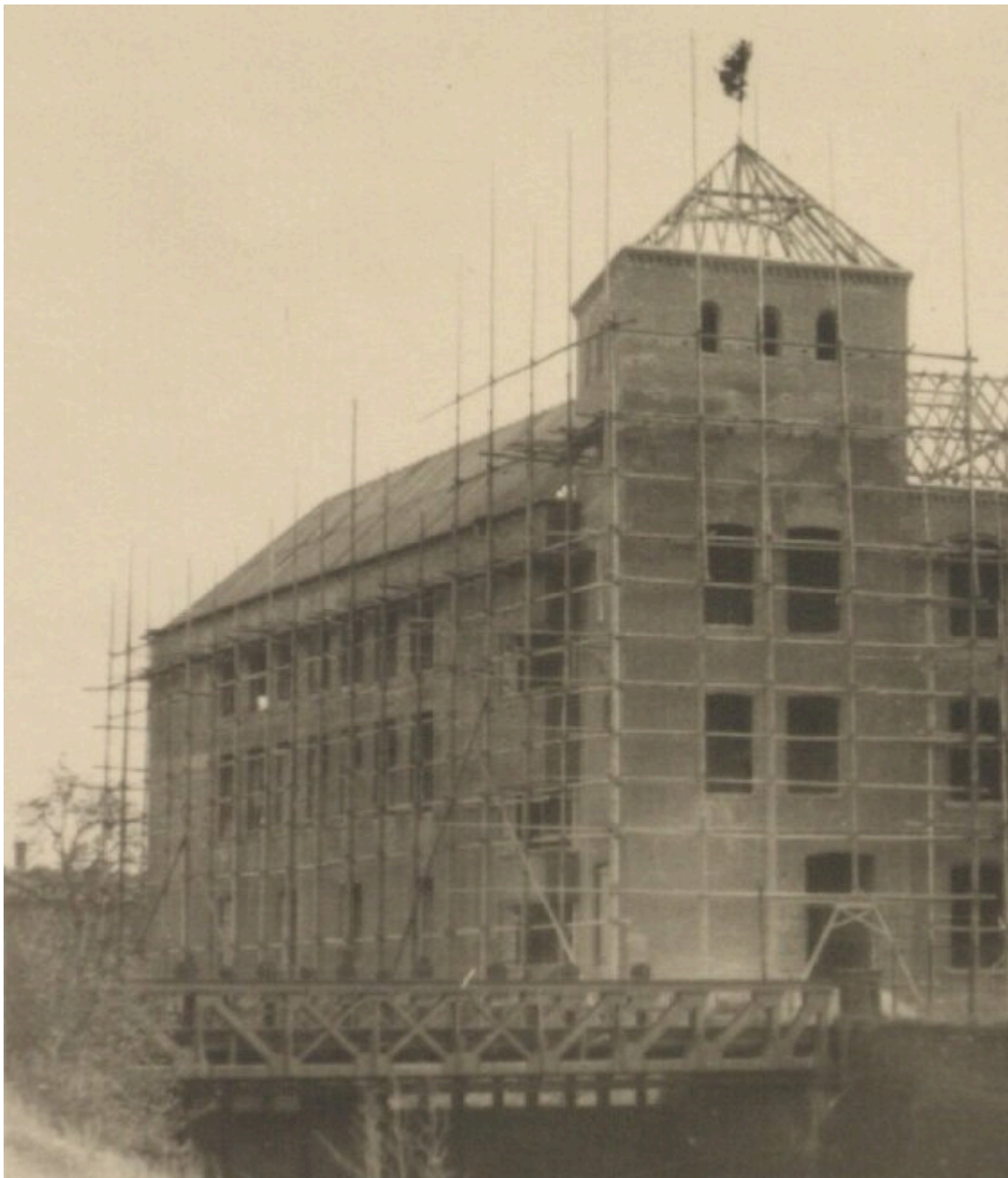
The viewer is on the north side of the Aa, where the Mühlengraben (so-called Binnena) and the actual Bocholter Aa unite behind Ravardistraße.

It looks south-east towards the building of the Höhere Töchterchule, today's Mariengymnasium, and the municipal lock.

The school building was built on land belonging to the pastorate of St. Georg and opened on 22 June 1900 because the previous premises in Langenbergstraße were no longer sufficient. Two years later, the new building was extended to accommodate the domestic science school. There was once a chapel on the north side of the first floor.

A bridge with an attached water sluice connected both banks of the river at this point. The barrage with a clear width of 15.5 metres was built in 1897/99 and replaced the previous construction from 1870. At the turn of the century, the Aa could also be navigated by smaller barges. The Bocholt rowing club had its own boats.





[<](#) **TO THE OVERVIEW**

Contact person

Oliver Brenn

GBL Kultur und Archiv

Kultur und Archiv

Kultur und Bildung



[Send e-mail](#)



[+49 2871 953-2174](#)

Supported by

Ministerium für Heimat, Kommunales,
Bau und Digitalisierung
des Landes Nordrhein-Westfalen



© MHKBDNRW