

23. August 2023

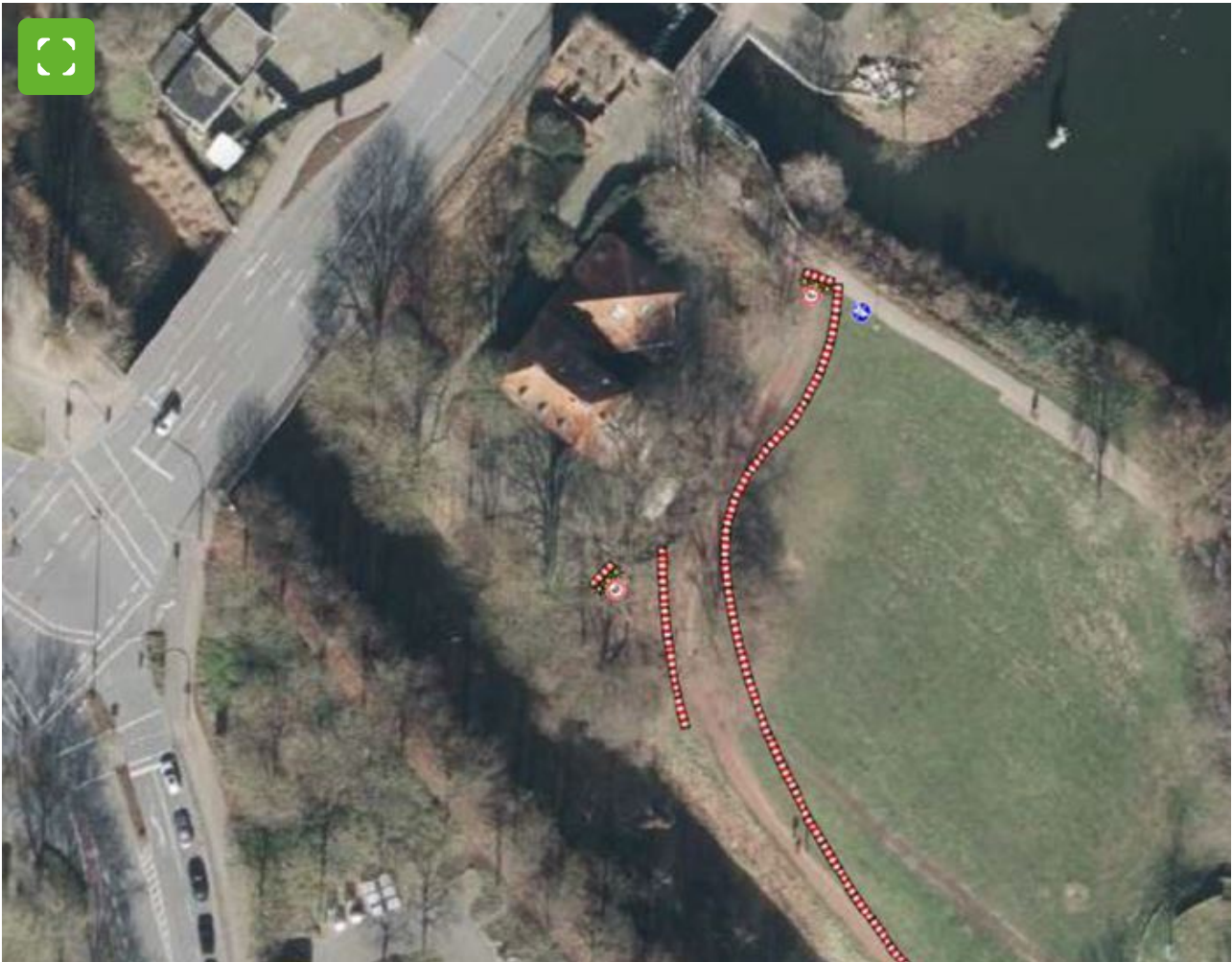
Traffic

Redevelopment: Construction site Aa cycle path "wanders"

From Monday, section between bridge and NaBu closed // Circumnavigation still possible

The renovation of the circular path around the Aa Lake is progressing rapidly. After the coming weekend of events (Nabu summer festival and charity walk), the next construction phase will begin on Monday, 28 August, when the area between the Aa bridge (near the fast food restaurant) and Nabu will be closed.

This measure will also continue to ensure that passers-by can walk or drive on the inner route around the Aa Lake.



From Monday, the rehabilitation of the section between the McDonalds bridge and Nabu will be tackled.

© *Stadt Bocholt*