

10. May 2023

Education and culture

## Fabric panels for "Lernwerk Cube" are attached

**This week, employees of the Hillebrandt company, on behalf of the city of Bocholt, used a large cherry picker to attach long lengths of fabric made of glass fibre to the "Studio-Kubus" of the Bocholt Lernwerk.**

The panels are three metres wide, and a total of about 400 metres of fabric with a total weight of almost 850 kilogrammes will be used.

According to the plan, the white, textile-covered cube will contrast with the brick building of the former spinning mill and remind us of Bocholt's textile history, which was once located on the industrial site.

The inscription "Kubaai - Lernwerk" will be added to the front of the building. The artificial word Kubaai stands for "Kulturquartier Bocholter Aa und Industriestraße". The Lernwerk is part of the transformation of the area between the city centre and Bocholter Aasee.



## About the Lernwerk

The city of Bocholt will house public educational institutions such as the music school, adult education centre and JUNGE Uni as well as the city's cultural administration in the Lernwerk, and the learning workshop of the district of Borcken will also move in. Bocholt's cultural associations will also find space in the Lernwerk in the future.

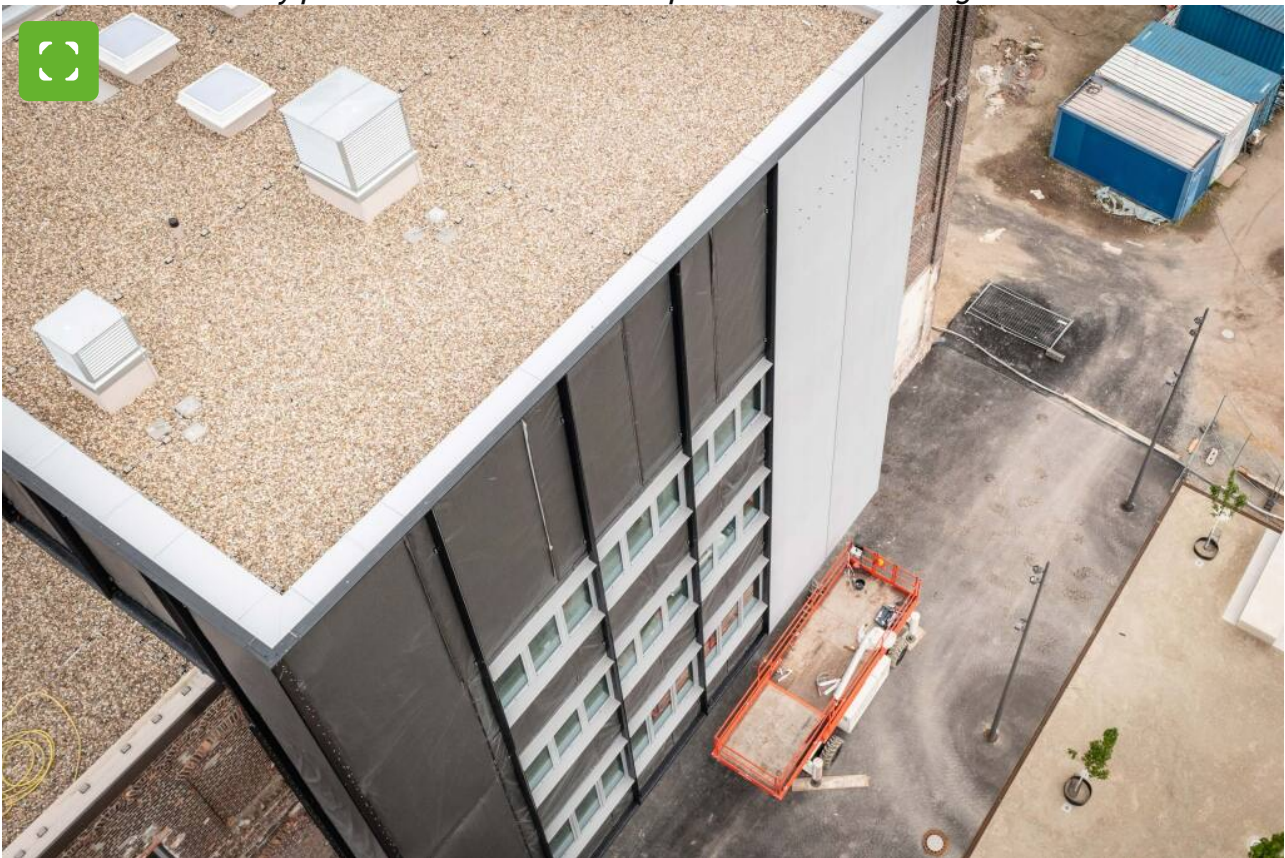
The construction work on the building should be completed in the summer, then the furnishing and interior design will be finished. If everything goes according to plan, the Lernwerk can be opened and put into operation at the beginning of autumn.

The costs of the reconstruction amount to about 18.5 million euros, financed with subsidies from the state of North Rhine-Westphalia.



© Stadt Bocholt

*Workers use a cherry picker to attach the fabric panels to the building*



© Stadt Bocholt

*The fabric panels are about three metres wide*





© Stadt Bocholt

*A total of about 400 metres of fabric are used*