

## Project: Green Centre

### The park in the Fildeken-Rosenberg neighbourhood

It is a leisure and living space in the middle of the neighbourhood: **the Grüne Mitte**.

On an area of four hectares, it combines **ecology** and **recreational space** for the residents of the Fildeken-Rosenberg neighbourhood. At the same time, the measures expanded the break facilities for pupils of the Bocholt Comprehensive School.

The extension and further development of the **Biemenhorst primary school (Weserstraße site)** includes the repair and extension of the existing schoolyard areas and the preparation of the outdoor facilities for the open all-day school.

The measures are part of the integrated action concept Fildeken-Rosenberg.



### Overview: The "Green Centre" in figures

#### About the park:

- **4 hectares of contiguous open space** with 1000 metres of path network.
- approx. **90 new trees** and **1600 m<sup>2</sup> of semi-natural field hedges**
- more than **12,000 m<sup>2</sup> of wildflower meadows** and **gravel lawns**

#### New recreational facilities:

- **220 m<sup>2</sup> playground area** for different age groups
- **1000 m<sup>2</sup> exercise meadow for dogs**
- **180 m<sup>2</sup> outdoor fitness area** with exercise equipment
- **Newvolleyball field** and **football pitch**

#### Schoolyard extension of the comprehensive school:

- **5,000 m<sup>2</sup> extended schoolyard area**
- approx. **400 m<sup>2</sup> terrace** of the refectory
- **New climbing spiral** in the schoolyard
- **15 new trees** and **approx. 1000 m<sup>2</sup> of insect-friendly perennial plants**

# Overview: The "Biemenhorst Primary School" in figures

© MOLA Landschaftsarchitektur GmbH



*The Biemenhorst Primary School (Weserstraße)*

## Redesign of the outdoor facilities at Biemenhorst School:

- Play hill with slide
- New bicycle parking spaces
- Balancing apparatus and climbing combination for OGS schoolyard
- Approx. 250 m<sup>2</sup> of insect-friendly perennial plants
- 15 new trees

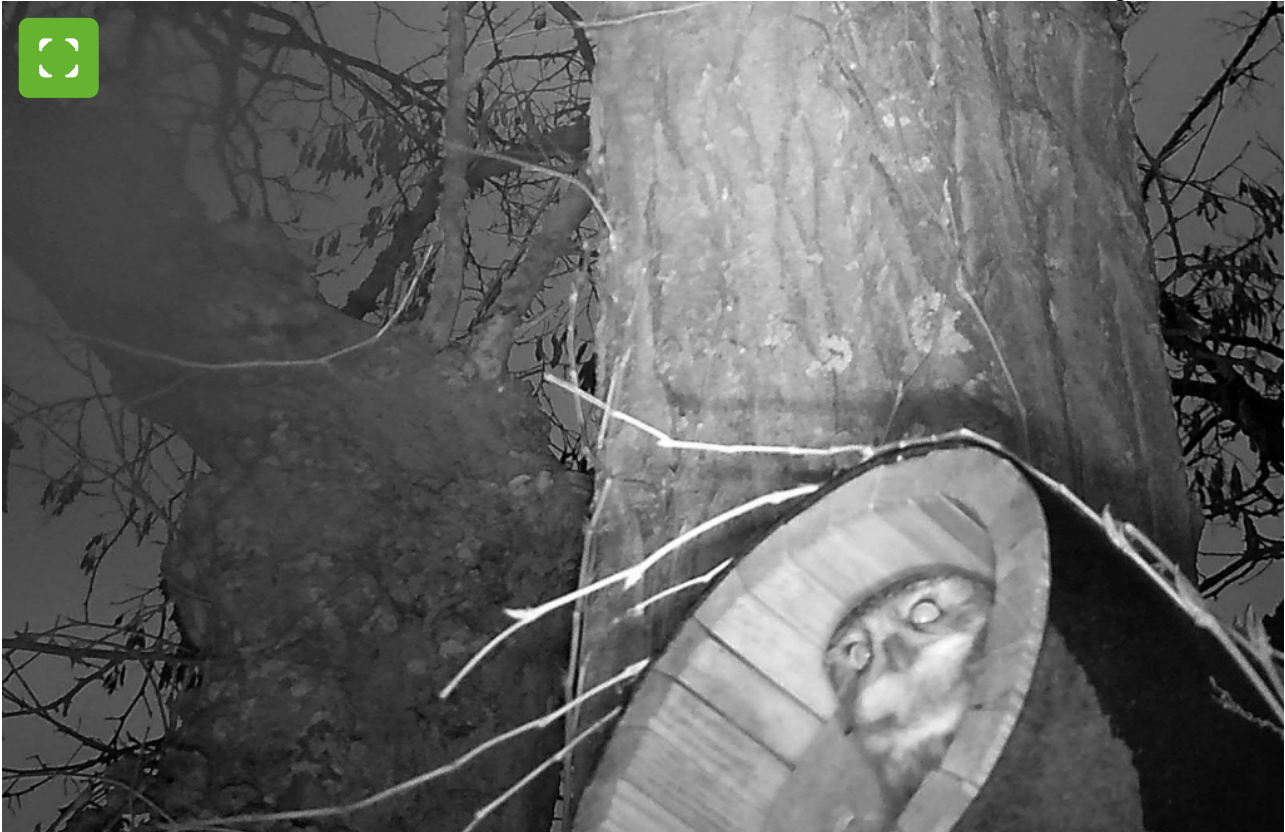
## Trees preserved as far as possible

When redesigning the Green Centre, care was also taken to preserve existing trees and shrubs wherever possible. Existing trees were included in the design of the Green Centre and taken into account in the routing of the path, among other things.



## The Little Owl is breeding again this year

© steverding-artenschutz.de



*The little owl looks out of the common nest.*

The Green Centre is not only an open space for the neighbourhood but also a habitat for a very special inhabitant: the **Little Owl**.

A long-time resident pair of Little Owls will breed there again in 2023. The concerns of the Little Owl were given special consideration in the redesign of the Green Centre, for example in the selection and arrangement of the vegetation.

A mosaic of structurally rich meadows and low grassy areas was integrated into the park landscape, which is divided by hedge structures. This provides a habitat for prey animals and, in combination with numerous perching posts, good hunting conditions for the Little Owl, which it needs to care for its offspring.

## Outlook: The "Rosenberg green corridor"

As the third sub-measure, work on the Rosenberg green corridor is to begin this year. The planning work has already been completed. In the area of the green corridor, the open spaces are to be upgraded and a diverse range of activities for all age groups is to be created.

Another goal: After the redesign, a continuous path is to connect the green corridor.

## Gallery: The Green Centre

















## Planning questions

**Tobias Elskamp**

**Stadtgrün und Umwelt**

**Mobilität und Umwelt**



[Send e-mail](#)



[+49 2871 953-3260](tel:+4928719533260)

## Questions about neighbourhood work



**Lars Hübers**

**Kaufmännisches Gebäudemanagement**

**Gebäudewirtschaft**



[Send e-mail](#)



[+49 2871 953-3214](tel:+4928719533214)

## Promoted by



Bundesministerium  
des Innern, für Bau  
und Heimat



STÄDTEBAU-  
FÖRDERUNG

von Bund, Ländern und  
Gemeinden



Ministerium für Heimat, Kommunales,  
Bau und Gleichstellung  
des Landes Nordrhein-Westfalen



