

Private construction measures

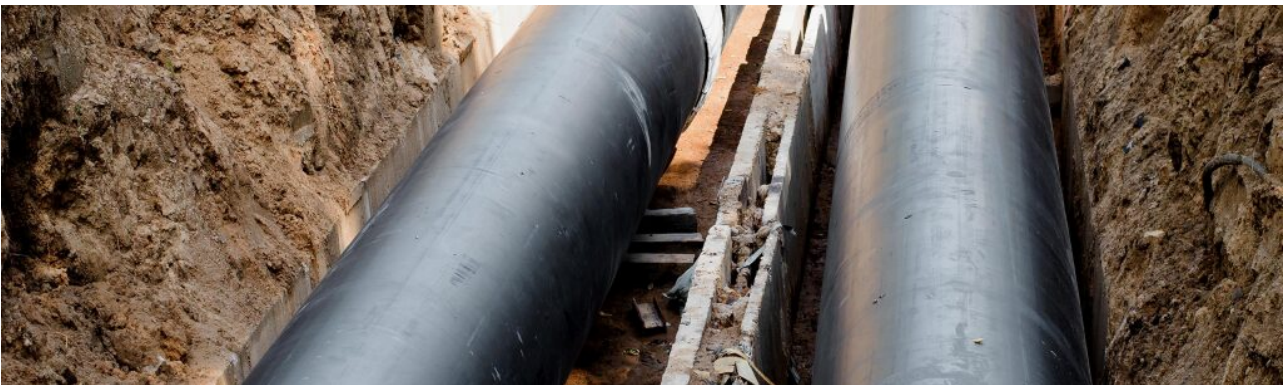
On these pages you can find out what you need to consider when constructing property access roads, private utility lines and facades that directly border - or build over - urban traffic areas.



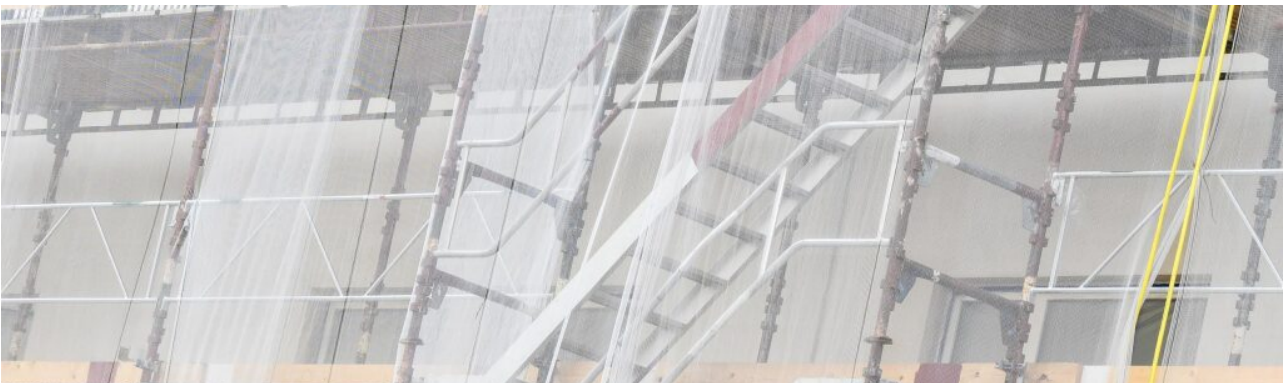
Property access ►



Shaft structures ►



Private supply lines ►



Facade renovation ►

Processing time

The processing time for the construction measure to be applied for is **about six weeks**. A site visit with a member of staff from the "Mobility and Environment" department must be arranged for each construction project.

Any questions?

Then please contact us at the following e-mail address:

[tiefbauamt\(at\)bocholt\(dot\)de](mailto:tiefbauamt(at)bocholt(dot)de)